



Social Emotional Learning Survey: Fall 2020

OVERVIEW

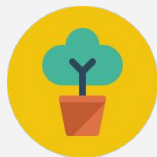
With school closures this past spring forcing students to learn at home, the need for educators to understand their student's social emotional needs and skills are more important than ever. As schools plan to support each and every student as they return to school, the Hawaii Department of Education and Panorama Education are partnering to support the measurement of students' SEL skills across the state.

Each school has the opportunity to opt in to participate this fall. This survey is not a screener, but may be used as part of the screening process to provide educators formative data they can use to better understand each student's experience and design supports to meet their needs.

PROGRAM GOALS

- Leverage social and emotional data to deepen the focus on key outcomes, such as HA and SEL competencies
- Assist schools with building a vision to support the Whole Child
- Address student needs and improve school climate

Survey Content



Student Competencies

(3rd-5th) [sample](#)

(6th-12th) [sample](#)

- Self-Efficacy
- Self-Management
- Social Awareness
- Grit
- Emotion Regulation
- Growth Mindset
- Sense of Belonging

Teacher Perception of Students

(K-2nd) [sample](#)

- Grit
- Self-Management
- Social Awareness
- Self-Efficacy
- Emotion Regulation

Survey Details



Online survey-taking

Student Competencies

- 3rd - 12th grade students
- Available in 15 languages
- Each student enters their unique student ID to access their surveys
- Teachers should dedicate 1 class period to survey-taking (*10-15 min of set up and tone-setting, 15-20 min for survey-taking*)

Teacher Perception of Students

- Homeroom teachers of Kindergarten - 2nd grade students
- Each teacher will receive an email with their unique survey link, listing each of their students.
- Teachers will complete the 6-question survey about **each** of their students.



Social Emotional Learning Survey: Fall 2020

Reporting Results

Reporting Features

- State, Complex Area, and School level reports to view aggregates
- Comparisons to Panorama’s National Dataset
- Groups View to understand the experience of demographic groups
- Playbook to identify strategies that support SEL instruction
- Student-level reporting available to support the growth of each students



Access to Results

- Differentiated levels of access, with teachers seeing only the students they teach
- Tiered rollout available, with administrators receiving access first, then teachers
- Virtual trainings and resources available for digging into results

KEY DATES

Milestone	Timeframe
Deadline for schools to opt in	Thu, August 20
SEL Survey Coordinator Webinar	Tues, August 25
SEL surveys administered	Mon, Aug 31 - Fri, Sept 25
Results available to school leaders	Week of Oct 5
Results available to teachers	Week of Oct 12

Next Steps

- **Opt In Form:** If you are interested in having your school participate, [complete this short form](#) and designate a coordinator.
- **Coordinator Training:** Panorama will hold an interactive webinar [45-60 min], in which school coordinators and/or principals will get a detailed walk-through of the program, including work time to design your school’s administration plan.