

# How Does Sex Trafficking Impact Our Schools and Students ?

Judge Karen Radius (Ret.)  
Tim Hitchens, MSW  
Maureen Ikeda Evans, Ed.D

May 1, 2021  
Virtual Environment- Rooms With A View- Conversations  
and Perspectives in Hawaii's School Communities  
Breakout Room #4

# What is Sex Trafficking?

---

- In 2000 the U.S. Congress passed the Trafficking Victims Protection Act of 2000, largely focusing on international and interstate trafficking and offenses that affect interstate or foreign commerce and occur within maritime and/or federal lands jurisdiction.....such as military bases, federal properties.
- Severe form of trafficking in persons was defined as sex trafficking in which a commercial sex act is induced by force, fraud or coercion or in which the person induced to perform such act is under 18 years of age.
- For children under 18 there does not have to be a direct payment of money. The federal definition of Sex trafficking for youth under 18 includes offering anything of value in exchange for sexual acts., i.e. housing, food, clothing, cell phones, etc.

# What is Sex Trafficking? (cont.)

---

- In 2016 the Hawaii State legislature passed amendments to our state criminal law to establish a more victim and survivor-centered approach to comprehensive anti-sex trafficking laws.
- HRS 710-1202 provides a person commits the offense of sex trafficking if the person knowingly (a) advances prostitution by compelling or inducing a person by force, threat, fraud or intimidation to engage in prostitution, or profits from such conduct by another; or
  - (b) advances or profits from prostitution of a minor. (a person less than 18 years of age)
- There are several bills pending in the 2021 legislature which will amend Hawaii state criminal law in this field if passed and signed by the Governor.

# What is Sex Trafficking? (cont.)

---

## Hawaii State Legislative Response

- In 2016--Amended the Hawaii Child Protective Act HRS 587A-4 definition of harm/child abuse that brings a child within the purview of DHS/CWS to include sex trafficking and labor trafficking.

And

- In 2017-- Amended HRS 350 -2 the mandated reporter law to require all mandated reporters to report to DHS or the police ALL KNOWN OR SUSPECTED CHILD VICTIMS OF SEX TRAFFICKING regardless of whether the parent, caretaker or family member in the home is the trafficker or not.

# What is Sex Trafficking (cont.)

---

## OTHER RELATED CRIMES THAT AFFECT CHILDREN AND OUR SCHOOLS

--HRS 712-1209 Solicitation of prostitution PROHIBITED near schools or public parks (750 foot boundary).

-- HRS Chapter 846 Internet Crimes Against Children such as --promoting pornography for minors, promoting minor-produced sexual images

# Local Response to Sex Trafficking

---

- *In May of 2017 THE CSEC STEERING COMMITTEE* for Oahu was formed with representatives of child serving state agencies , DOE, DHS, CAMHD, Family Court, Children's Justice Center, Office of Youth Services, MCCH, law enforcement (HPD), Attorney General's Office, Honolulu Prosecutor's Office and federal agencies such as the US Attorney's office, Homeland Security, FBI.
- *FAMILY COURT GIRLS COURT* has specialized program/court approach to girls and youth who identify as female who are involved in CSEC.
- *COMMUNITY AGENCIES/NON PROFITS* have recognized the problem and are providing some services such as school, community and agency-based professional development, workshops and resources.

# Are There Youth in Hawaii Involved in Sex Trafficking?

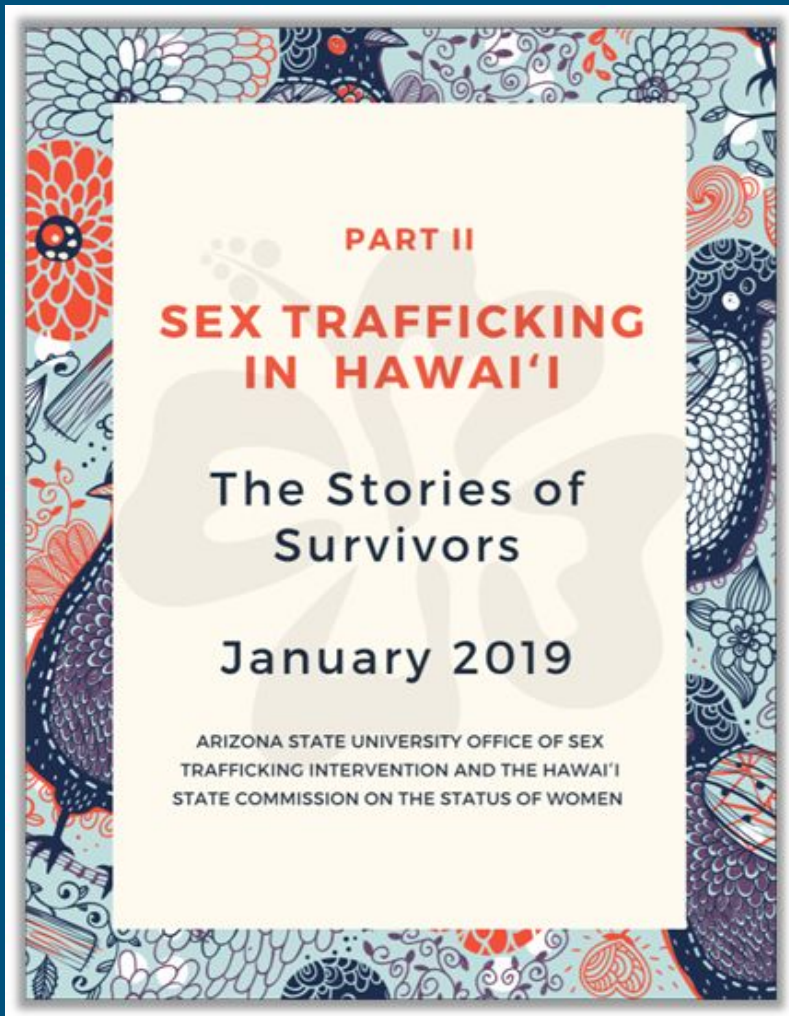
The short answer is YES

DOES IT AFFECT OUR SCHOOLS (Public/Private,Charter)? ABSOLUTELY

- Children who get caught up in the “life” are not in classes learning, taking advantage of the opportunities education provides.
- When they do come on campus, they may be seen as misfits, disruptive, uncaring about themselves or others, hard to deal with, mental health cases that drain resources from the other children.
- Other students recognize that some of their schoolmates are in the life, and may feel like they can't tell anyone, that the adults should know this is happening if we opened our eyes and hearts, that adults and the system as a whole just doesn't care and law enforcement is lame, not to be trusted.

Responding:  
From Risk to Restoration  
Empathy, not disclosure, is the key





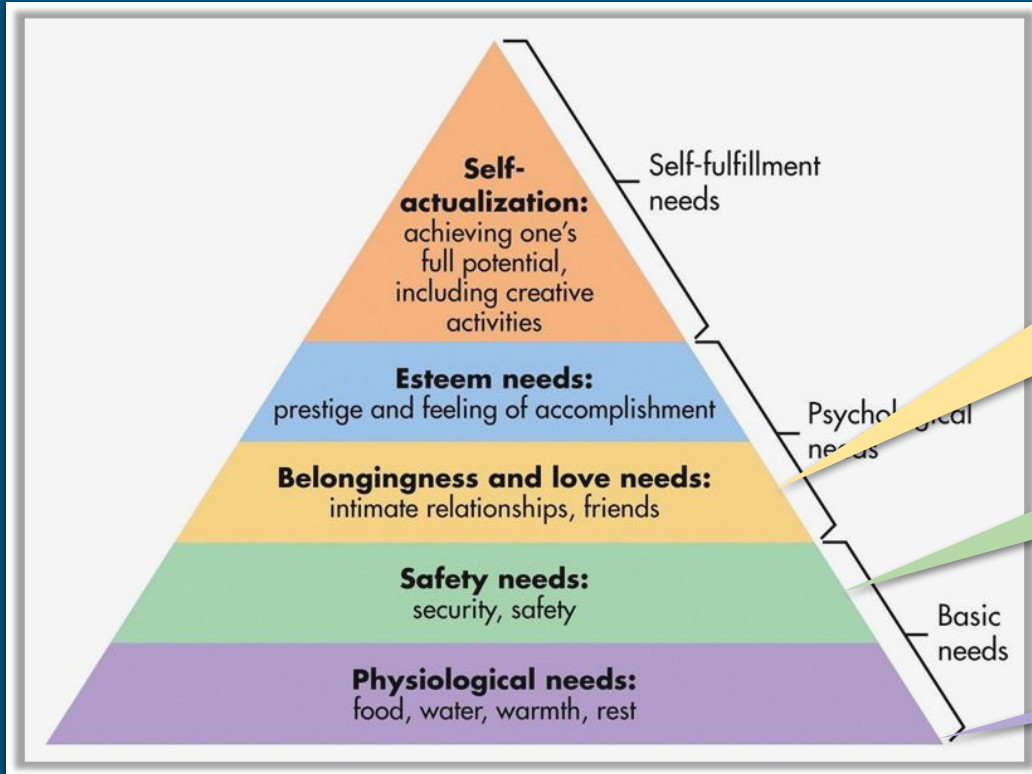
# What are we missing?

**All 22 participants were sex trafficked by a sex trafficker in Hawai'i.**

**“They all attended school....** A number of them were seen in emergency rooms as minors for injuries from violence by their sex trafficker. They were seen by hotel staff, law enforcement, business owners, sex buyers, and community members during their sex trafficking experiences.

**None of these bystanders offered support to the victims in this study.”**

# Risk & Response: Maslow's Hierarchy of Needs



Connection and belonging with family, friends, community, school, groups, a significant other.

Safety from physical and emotional harm and abuse; parents/ caregivers, peers, strangers, chaos, the unknown.

Basic Needs: food, clothing, shelter, protection from the elements, transportation, solitude, drugs, access.

# Risk & Response: Trauma

---

Trauma is the experience of severe psychological distress following any terrible or life-threatening event.

(Psychology Today)



## 7 Types

- Acute
- Chronic
- Complex
- Developmental
- Historical
- Intergenerational
- Vicarious

## BIG T

- Rape
- War
- Domestic Violence
- Child Abuse
- Slavery
- Immigration
- Happened to a friend

## little t

- Harassment
- Health Condition
- Family "Stuff"
- Inconsistent Caregiver
- Textbook Narratives
- Parenting Style
- Watching the news

# Risk Factors & Vulnerabilities

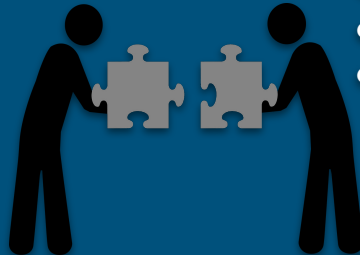
---

## Being a Teenager

- Puberty.
- Transition.
- Desire for love and acceptance.
- Desire for independence.
- Time alone in public places.
- Tests boundaries and take risks.
- Conflict or poor communication with parents.
- Insecurities, low self esteem.
- Access to technology.
- Lack of support system.

## Environment and Circumstances

- History of physical, sexual, emotional abuse or neglect.
- Mental health or substance abuse issues.
- Involvement in the Juvenile Justice or Child Welfare System.
- Family dysfunction, breakdown, poverty.
- Family, community, or societal sexualization of girls.
- Family members or friends involved.
- Prostitution in the neighborhood.
- Runaway/throwaway/homeless.



# High Schoolers, in the past 12 months...

---

## I was in a physical fight

- 16.7% (total)
- 12.7% (girls)
- 20.0% (boys)

## I was bullied online

- 13.1% (total)
- 15.8% (girls)
- 10.4% (boys)

## I was bullied at school

- 17.0% (total)
- 19.4 (girls)
- 14.4% (boys)

## I didn't go to school because I felt unsafe

- 12.4% (total)
- 12.9% (girls)
- 11.4% (boys)



# High Schoolers, in the past 12 months...

---

## I was physically forced to have sexual intercourse

- 7.7% (total)
- 11.0% (girls)
- 4.6% (boys)

## I have experienced sexual violence by someone

- 10.8% (total)
- 14.1% (girls)
- 7.2% (boys)

## I have experienced physical dating violence

- 8.6% (total)
- 8.4% (girls)
- 8.4% (boys)

## I had sexual intercourse before I turned 13

- 2.9% (total)
- 2.5% (girls)
- 3.1% (boys)



# High Schoolers, in the past 12 months...

---

**I have felt sad or hopeless almost every day for 2 or more weeks in a row**

- 34.7% (total)
- 44.1% (girls)
- 25.3% (boys)

**I have seriously considered attempting suicide**

- 16.7% (total)
- 20.1% (girls)
- 13.3% (boys)

**I made a plan about how I would attempt suicide**

- 14.6% (total)
- 17.8% (girls)
- 11.4% (boys)

**I attempted suicide**

- 10.5% (total)
- 11.2% (girls)
- 9.0% (boys)





# Middle Schoolers, in the past 12 months...

## I was bullied online

- 22.7% (total)
- 30.0% (girls)
- 16.0% (boys)

## I have seriously considered attempting suicide

- 27.2% (total)
- 38.5% (girls)
- 16.7% (boys)

## I attempted suicide

- 13.0% (total)
- 17.8% (girls)
- 8.6% (boys)

## I was bullied at school

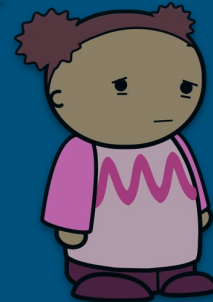
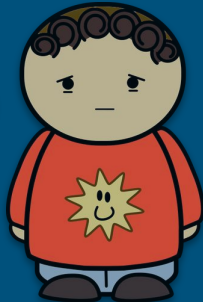
- 37.8% (total)
- 42.1% (girls)
- 34.0% (boys)

## I made a plan about how I would attempt suicide

- 18.7% (total)
- 25.0% (girls)
- 12.6% (boys)

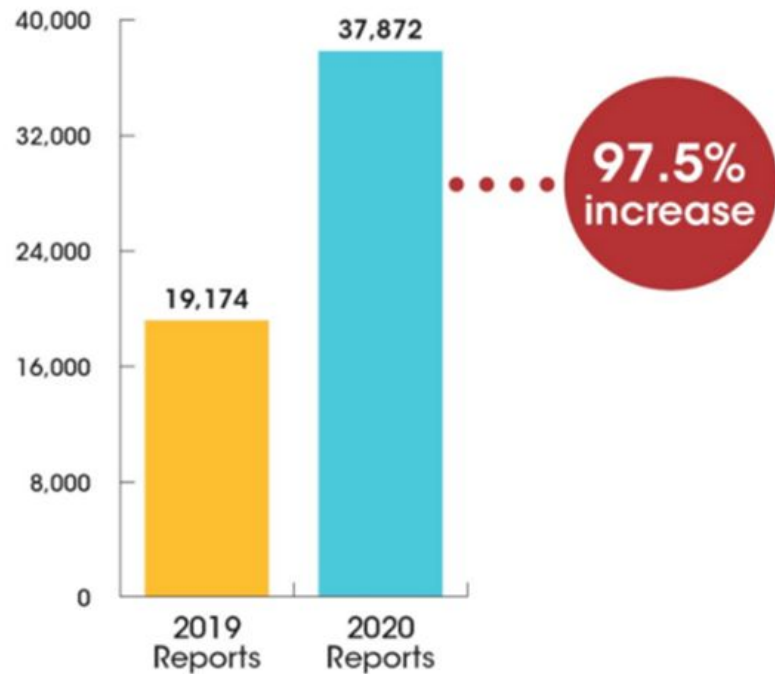
## I had sexual intercourse before I turned 11

- 2.4% (total)
- 1.8% (girls)
- 2.9% (boys)





# Online Enticement During COVID-19



Online Enticement Reports

## Online Enticement

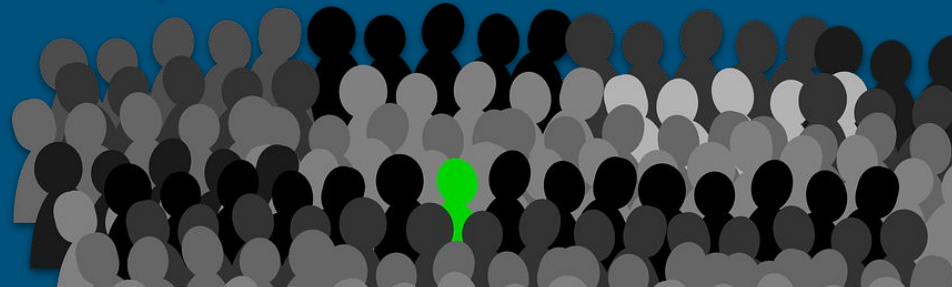
*involves an individual communicating with someone believed to be a child via the internet with the intent to commit a sexual offense or abduction. This is a broad category of online exploitation and includes sextortion, in which a child is being groomed to take sexually explicit images and/or ultimately meet face-to-face with someone for sexual purposes, or to engage in a sexual conversation online or, in some instances, to sell/trade the child's sexual images. This type of victimization takes place across every platform; social media, messaging apps, gaming platforms, etc.*

# Difficulty Identifying

---

## **Young people who have been exploited often:**

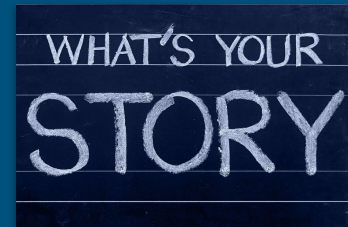
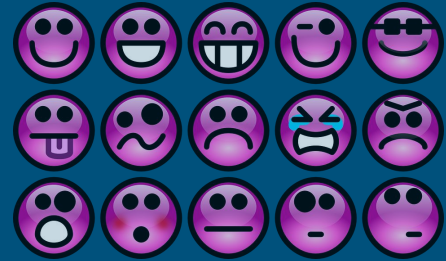
- Don't perceive that they have been exploited or trafficked
- Don't perceive trafficker as trafficker
- Have a distrust of law enforcement and service providers based on past experiences or what they've been told
- Don't perceive that they have better options
- Are psychologically controlled by or trauma bonded to trafficker
- Believe it is their fault and their responsibility
- Feel shame or blame
- Don't think anyone will believe them



# Consider Unidentified Survivors

---

- Be genuine. Use empathy, not sympathy or pity
- Be Clear and Consistent
- Be Trustworthy
- Pay Attention
- Promote positive self image, good friends, good adults
- Be intentional against shame, blame, fear, stigma, judgment
- Stand up for unidentified survivors
- Believe them



# believe

# Continue this conversation with HNP

---

- Attend free, live webinars every Wednesday, 4-5:30pm.
- Ask about our 5th Grade SEL/ELA/Hā enrichment curriculum.
- Schedule a professional development training
  - Educators
  - Social Workers (for CEUs)
  - Law Enforcement
  - Healthcare Professionals
- Schedule a parent, caregiver, community presentation

[Hoolanapua.org/education](https://hoolanapua.org/education)  
[tim.hitchens@hoolanapua.org](mailto:tim.hitchens@hoolanapua.org)

# What Can YOU Do About Sex Trafficking?

---

If you suspect trafficking, report it to DHS Child Welfare Services immediately,

1. Call the DHS hotline
2. Complete and fax the [Mandatory Reporter Checklist](#) form for Suspected Human Trafficking (DHS-1685)

In June 2017 DHS established a hotline to report Child Sex and Labor Trafficking -Oahu (808) 832-1999

Toll Free from the Neighbor Islands or outside the state- (888) 398-1188

Mandated reporters are REQUIRED TO CALL. CONCERNED CITIZENS, FAMILY OR COMMUNITY MEMBERS

DHS Established a contract with Susannah Wesley Community Center Trafficking Victim Assistance Program (TVAP).. These folks will screen and assess the youth, provide case management, therapy, and other services as well as work with law enforcement, DHS and the other team members.

You may call other CSEC specialized agencies for a consultation but the actual report NEEDS TO be made to DHS child welfare services (as you would report any other form of abuse)

# What can YOU Do About Sex Trafficking

---

Build your knowledge and awareness and encourage others to do the same!

- Contact Tim at Ho'ōla Nā Pua for future training opportunities
- Check out the DOE [Sexual Violence Prevention landing page](#) for more training opportunities
- Keep the conversations going with colleagues, friends, relatives, community

# CSEC Resources

Department of Human Services trafficking hotline 808 832-1999. toll free neighbor islands 888-398-1188  
<http://humanservices.hawaii.gov/ssd/home/child-welfare-services>

Department of Education Mandatory Reporting- contact Maureen Ikeda Evans

Susannah Wesley Trafficking Victims Assistance Program [www.tvaphawaii.org](http://www.tvaphawaii.org)

Ho'ola Na Pua [www.hoolanapua.org](http://www.hoolanapua.org) Pearl Haven residential treatment center, Starfish mentoring, Hoku empowerment groups, Education & Training

Hale Kipa Hale Lanipolua Assessment Center (HLAC) [www.halekipa.org/es](http://www.halekipa.org/es)

Missing Child Center Hawaii [www.ag.hawaii.gov/cpja/mcch](http://www.ag.hawaii.gov/cpja/mcch)

Girls Court/Family Court [www.girlscourthawaii.org](http://www.girlscourthawaii.org)

Commercial Exploitation of Children (CSEC) Steering Committee- Contact Judge Radius

Sex Abuse Treatment Center (SATC)- Kapiolani Medical Center- <http://satchawaii.com> Sex abuse/assault hotline: (808) 524-7273

Saving Innocence [www.savinginnocence.org](http://www.savinginnocence.org)

Polaris [www.Polarisproject.org](http://www.Polarisproject.org)

National Human Trafficking Hotline - 888-3737-888 or text BE FREE (233733)

[Mental Health of America- Crisis Card](#)

[Hawaii State Department of Education You Matter Card](#)

# If you wish to contact us

---

Judge Karen Radius (Ret.)

[karenradius@gmail.com](mailto:karenradius@gmail.com)

Tim Hitchens, MSW

Education Program Manager, Ho'ōla Nā Pua

[tim.hitchens@hoolanapua.org](mailto:tim.hitchens@hoolanapua.org)

808-445-3131

Maureen Ikeda Evans

Educational Specialist, Hawaii State Department of Education

[maureen.ikeda\\_evans@k12.hi.us](mailto:maureen.ikeda_evans@k12.hi.us) (DOE gmail)

808-305-9787



# Questions/Discussions

---

- Please feel free to post questions in the chat box
- Mahalo for joining our breakout room

